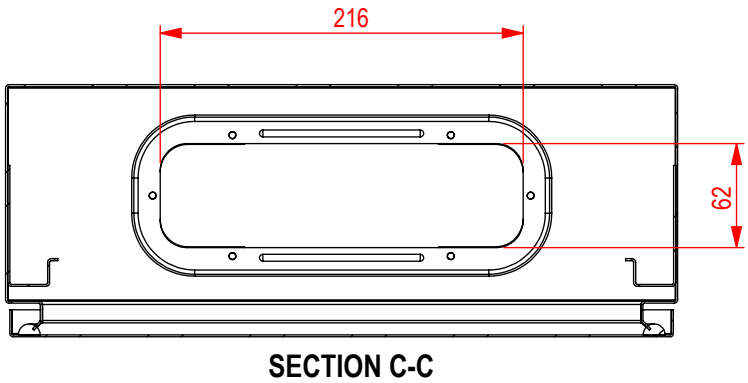


Specification:

Din Rail Enclosure: 3 x 16 Poles (48 Modules)
(Includes Din Rail Insert and Escutcheon Front Plate)
Dimension: 600H x 400W x 150D - Single Door (2 Lock)
Degree of Protection: IP66
No. of Hinges: 2 (Reversible Hinged Door - 120 Degree Opening)
Door Seal: Polyurethane sealing
Terminal Bar: 100Amp Earth and Neutral Brass bar - 2 Screws, 5mm Tunnel, M8 Screw for main cabling
No. of Terminal Bar: 2 x 16-way Earth and 2 x 16-way Neutral Bar
Mounting Holes: 4x Ø8.5mm Rear mounting holes
Mounting Bracket: 4x Stainless steel wall mounting brackets with sealing gasket
Gland: Gland plate with sealing gasket
Earth studs: On door and body
Triangle Lock: Stainless Steel
Standard: Complies with IEC/EN 62208



Material:

Body & Door - 1.2mm Thick 316 Stainless Steel
Gland Plate - 1.2mm Thick 316 Stainless Steel
Escutcheon Front Plate - 1.2mm Thick Grey Powder Coated Galvanized steel

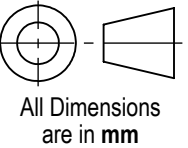
Company Confidential

This drawing and any information or descriptive material set out on it are the confidential and copyright property of Elecron Baal. © and MUST NOT BE DISCLOSED, COPIED, LOANED in whole or part or used for any purpose without the written permission of *Elecron Baal*.



2 / 6 Cary Grove Minto NSW 2566, Australia
Tel. No: +61 2 72301357
email: info@elecronbaal.com.au
Website : <https://elecronbaal.com.au>

Projection: Third Angle



All Dimensions are in mm

Drawn: KS	Description: 600 x 400 x 150 SSIPDR Enclosure			
Date: 26/04/2025	Dwg No: SSIPDR316			
Checked: BA	Material: 316 Stainless Steel (SS)	Weight: 13.8 kg		
Issued on: 28/04/2025	Revision: A	Scale: NTS	A3	Sheet: 1 / 1